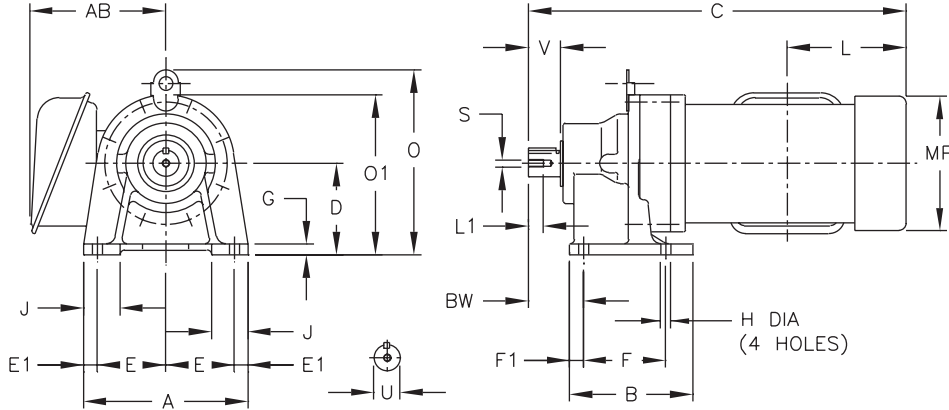


Dimensions Single Phase, Integral Foot Mount

Single Reduction CNHM-6065Y-SG ▶ 6120/5Y-SG



***Shaft Tolerances**

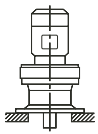
Shaft Nominal Diameter (inches)	Tolerances (inches)
0.500 (1/2) through 0.625 (5/8)	+0.0000/-0.0004
0.750 (3/4) through 1.125 (1 1/8)	+0.0000/-0.0005
1.250 (1 1/4) through 1.875 (1 7/8)	+0.0000/-0.0006

All dimensions are in inches

Model CNHM	A	B	D	E	E1	F	F1	G	H	J	O	O1	P	BW
6065Y-SG	5.67	3.31	3.15	2.36	0.47	2.36	0.47	0.39	0.35	1.38	-	5.31	4.33	1.61
6075Y-SG	5.67	3.31	3.15	2.36	0.47	2.36	0.47	0.39	0.35	1.38	-	5.31	4.33	1.85
6090/5Y-SG	7.09	5.31	3.94	2.95	0.59	3.54	0.59	0.47	0.43	1.57	-	6.89	5.91	2.36
6100/5Y-SG	7.09	5.31	3.94	2.95	0.59	3.54	0.59	0.47	0.43	1.57	8.15	-	5.91	2.36
6120/5Y-SG	9.06	6.10	4.72	3.74	0.79	4.53	0.79	0.59	0.55	2.17	10.12	-	8.03	3.23

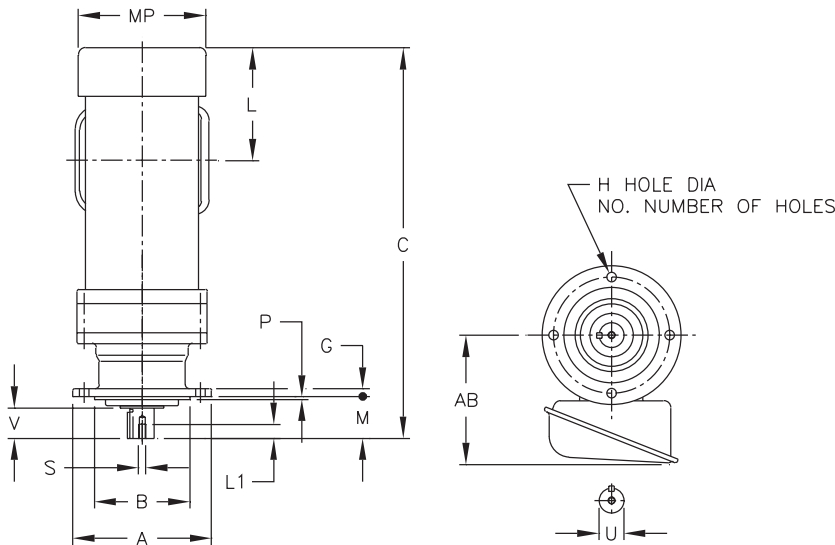
Model CNHM	U*	V	Low Speed Shaft		Key
			S	L1	
6065Y-SG	0.500	0.98	10-32UNF	0.63	1/8 X 1/8 X 0.79
6075Y-SG	0.750	1.18	12-28UNF	0.63	3/16 X 3/16 X 1.06
6090/5Y-SG	1.125	1.38	5/16-18UNC	0.79	1/4 X 1/4 X 1.18
6100/5Y-SG	1.125	1.38	5/16-18UNC	0.79	1/4 X 1/4 X 1.18
6120/5Y-SG	1.500	2.17	5/16-18UNC	0.79	3/8 X 3/8 X 1.77

Model CNHM	Motor HP	C	MP	AB	Appx. Wt (lb)
6065Y-SG	1/8	13.42	6.02	5.79	30
	1/4				
6075Y-SG	1/8	13.66	6.02	5.79	32
	1/4				
	1/3 1/2				
6090/5Y-SG	1/8	15.79	6.02	5.79	46
	1/4				
	1/3				
	1/2				
	3/4 1				
6100/5Y-SG	1/3	17.76	6.02	5.79	52
	1/2				
	3/4 1				
6120/5Y-SG	3/4 1	18.63	7.83	6.50	94



Dimensions Single Phase, Integral Universal V-Flange

Single Reduction CNVM-6065Y-SG ▶ 6120/5Y-SG



All dimensions are in inches

Model CNVM	A	B	G	H	NO.	M	P	AH
6065Y-SG	4.72	3.1484 3.1466	0.31	0.35	6	1.34	0.12	4.02
6075Y-SG	6.30	4.3293 4.3272	0.35	0.43	4	1.65	0.12	5.28
6090/5Y-SG	6.30	4.3293 4.3272	0.35	0.43	4	1.89	0.12	5.28
6100/5Y-SG	6.30	4.3293 4.3272	0.35	0.43	4	1.89	0.12	5.28
6120/5Y-SG	8.27	5.5101 5.5076	0.51	0.43	6	2.72	0.16	7.09

***Shaft Tolerances**

Shaft Nominal Diameter (inches)	Tolerances (inches)
0.500 (1/2) through 0.625 (5/8)	+0.0000/-0.0004
0.750 (3/4) through 1.125 (1 1/8)	+0.0000/-0.0005
1.250 (1 1/4) through 1.875 (1 7/8)	+0.0000/-0.0006

Model CNVM	Low Speed Shaft				Key
	U*	V	S	L1	
6065Y-SG	0.500	0.98	10-32UNF	0.63	1/8 X 1/8 X 0.79
6075Y-SG	0.750	1.18	12-28UNF	0.63	3/16 X 3/16 X 1.06
6090/5Y-SG	1.125	1.38	5/16-18UNC	0.79	1/4 X 1/4 X 1.18
6100/5Y-SG	1.125	1.38	5/16-18UNC	0.79	1/4 X 1/4 X 1.18
6120/5Y-SG	1.500	2.17	5/16-18UNC	0.79	3/8 X 3/8 X 1.77

Model CNVM	Motor HP	C	MP	AB	Appx. Wt (lb)
6065YA-SG	1/8	13.42	6.02	5.79	27
	1/4				
6075YA-SG	1/8	13.66	6.02	5.79	31
	1/4				
	1/3				
6090/5YA-SG	1/2	15.08	6.02	5.79	36
	1/8				
	1/4				
	1/3				
6100/5YA-SG	1/2	17.20	6.02	5.79	48
	3/4				
	1				
6120/5YA-SG	1	17.25	7.83	6.38	67
	1/3				
	1/2				
6100/5YA-SG	1/2	17.76	6.02	5.79	55
	3/4				
	1				
6120/5YA-SG	1	17.80	7.83	6.50	74
	3/4				
6120/5YA-SG	1	18.63	7.83	6.50	94
	3/4				