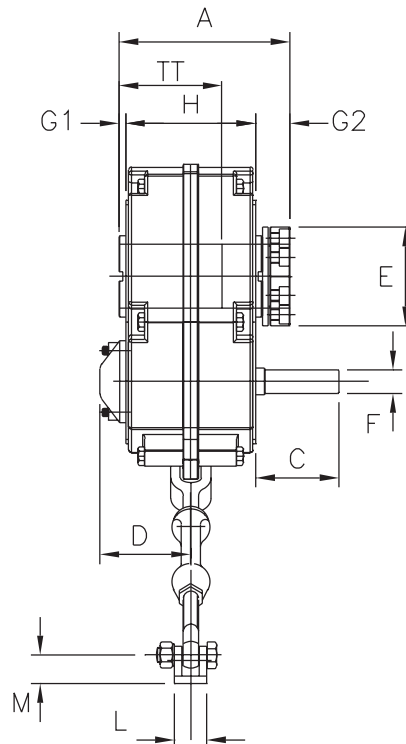
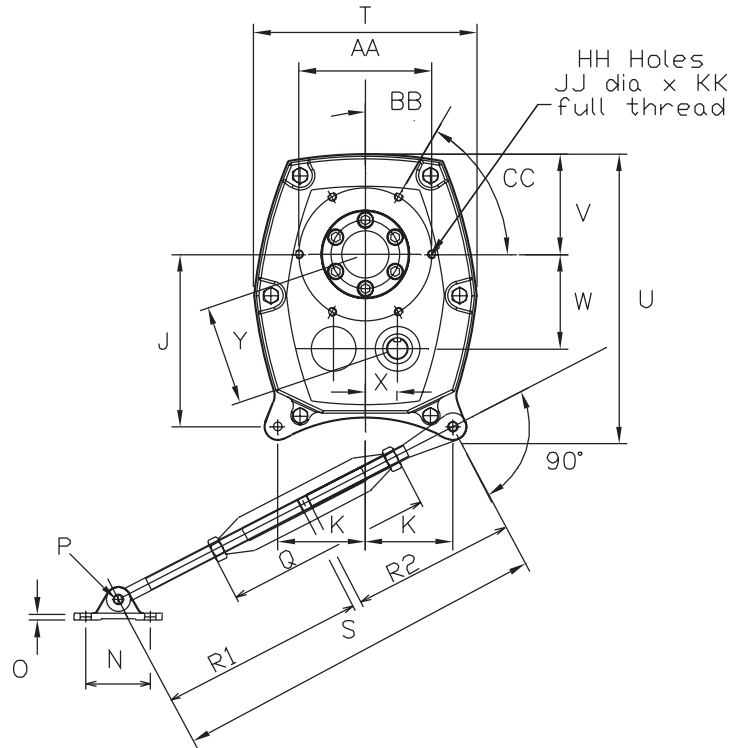


Dimensions – Unit Sizes 107 ~ 307



Dimensions – Unit Sizes 107 ~ 307

DIMENSION	UNIT SIZE					
	107C	115D	203E	207F	215G	307H
A	6.38	6.69	7.24	7.91	9.09	10.28
B	Refer to Bore Size table on page 7					
C	2.87	3.23	3.43	3.74	3.94	4.53
D [1]	3.23	3.66	3.74	4.25	4.49	5.00
E	3.23	3.62	4.09	4.49	5.43	5.98
F (key)	Ø3/4 (3/16 x 3/16)	Ø15/16 (1/4 x 1/4)	Ø1-1/16 (1/4 x 1/4)	Ø1-1/8 (1/4 x 1/4)	Ø1-5/16 (5/16 x 5/16)	Ø1-11/16 (3/8 x 3/8)
G1	0.16	0.16	0.16	0.28	0.28	0.28
G2	1.46	1.42	1.65	1.54	1.97	2.01
H	4.65	5.00	5.31	6.10	6.85	7.99
J	5.45	6.65	7.91	9.35	10.28	11.57
K	3.01	3.31	4.02	4.76	5.24	5.98
L	0.94	1.34	1.34	1.65	1.65	2.76
M	0.79	0.94	0.94	1.26	1.26	1.97
N	2.56	2.95	2.95	3.94	3.94	4.72
O	0.20	0.31	0.31	0.47	0.47	0.71
P	0.39	0.51	0.51	0.67	0.67	0.63
Q	7.87	8.50	8.50	8.50	8.50	8.74
R1	11.8	13.8	13.8	14.8	14.8	14.8
R2	6.57	7.44	7.44	9.69	9.69	10.4
S Min.	18.4	21.2	21.2	24.4	24.4	25.1
S Max.	24.3	27.1	27.1	30.4	30.4	31.0
T	7.32	8.58	10.16	10.9	12.5	14.4
U	9.21	11.10	12.99	15.2	16.6	18.8
V	3.19	3.78	4.61	5.08	5.63	6.38
W	2.95	3.54	4.33	4.94	5.55	6.14
X	1.00	1.22	1.46	1.71	1.96	2.20
Y	3.11	3.74	4.57	5.24	5.88	6.54
AA	4.72	5.31	6.10	6.89	8.35	10.04
BB	45°	45°	30°	30°	30°	0°
CC	90°	90°	60°	60°	60°	60°
HH	4	4	6	6	6	5
JJ	M10	M10	M10	M12	M16	M20
KK	0.59	0.59	0.59	0.71	0.83	0.98
TT	2.9	3.2	3.6	3.8	4.4	4.9
Single Red. Wt. (lbs)	30.9	48.5	68.4	99.2	141.1	220.5
Double Red. Wt. (lbs)	33.1	52.9	75.0	108.0	152.1	238.1

Note: [1] Dimension D is increased by 0.28 inches when a backstop is fitted.

Exact Ratio

Nominal Ratio	Unit Size					
	107C	115D	203E	207F	215G	307H
5:1	4.941	5.050	5.047	5.047	5.047	5.047
14:1	13.410	13.596	13.587	13.587	13.395	13.587
20:1	20.421	20.466	20.455	20.455	20.455	20.455
25:1	23.544	25.250	25.235	25.235	25.235	25.235

Dimensions shown are for reference only and are subject to change without notice, unless certified.
Certified prints are available after receipt of an order; consult factory.